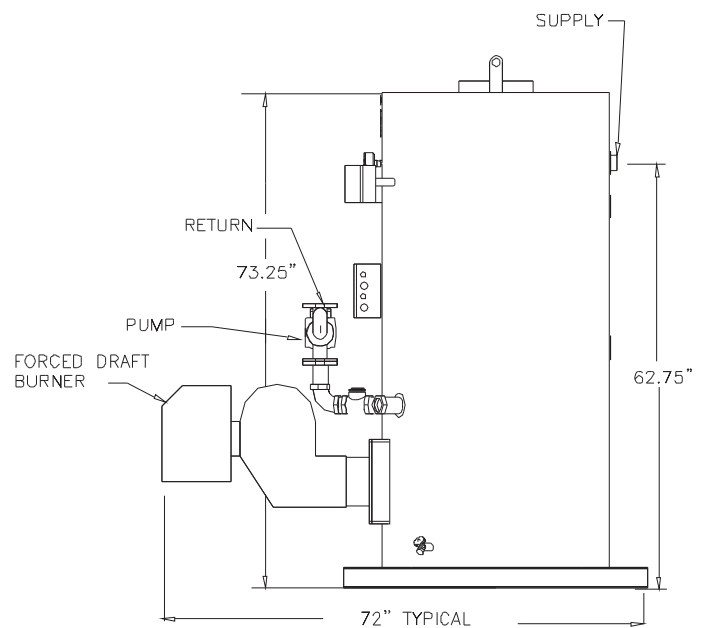
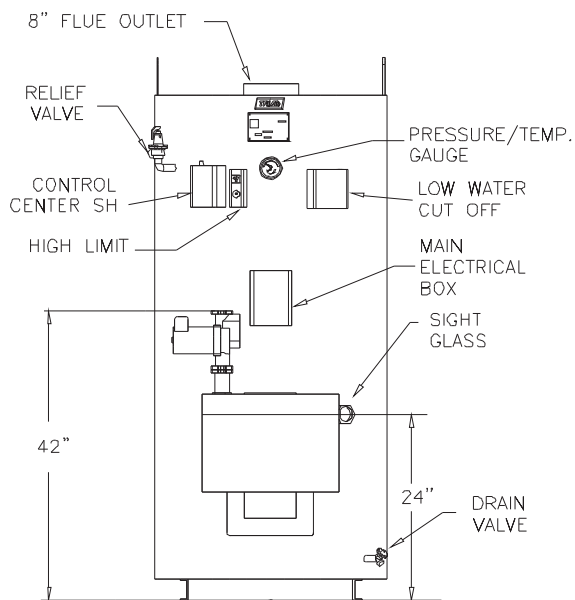
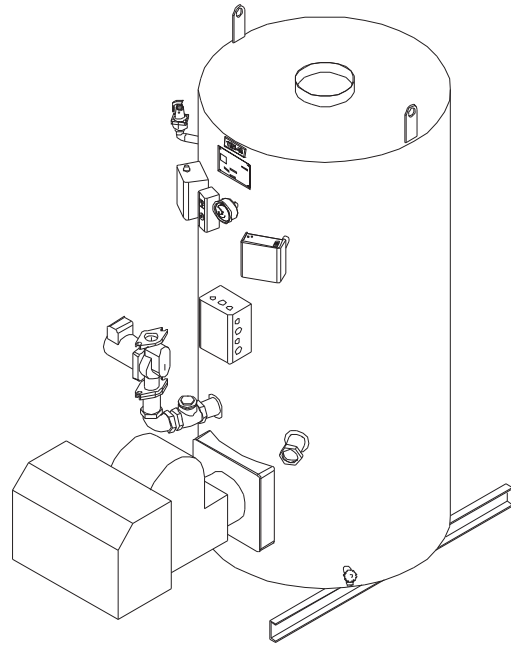
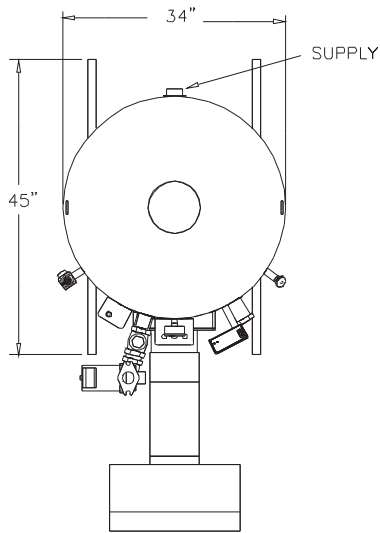




West Chicago, IL 60185  
Phone: 630-562-2700  
[www.triadboiler.com](http://www.triadboiler.com)

## TRIAD BOILER SYSTEMS, INC. SERIES 1600 SPACE HEAT BOILER



Note: Dimensions subject to change without notice.



**TRIAD BOILER SYSTEMS, INC.**  
**SERIES 1600 SPACE HEAT BOILER (Model SH)**

The Series 1600 is a steel vertical firetube packaged boiler with a water-backed combustion chamber equipped with high-efficiency turbulators. Boilers come fully wired, and fit through a 36" doorway.

**STANDARD EQUIPMENT:**

- Low/High/Off Power Burner (UL Listed)
- Circulating Pump
- Honeywell Control Center
- Low Water Cut-Off
- Combination Pressure/Temperature Gauge
- Operating Light
- Relief Valve
- Second Safety High Limit with Manual Reset
- Vessel Pressure Rating of 125 PSI
- UL Listed Boiler/Burner Package.

**OPTIONAL EQUIPMENT:**

- Gas Fired (NG or Propane), Oil Fired, or Dual Fuel Burners
- UL, IRI, FM and CSD-1 Compliance
- Low/High/Low and Modulating Gas Trains
- Sealed Combustion Air Intake
- Barometric Dampers
- LWCO with Manual or Auto Reset, Test Light, and/or Test Button

**SPECIFICATIONS:**

<i>Input BTU/Hr</i>	<i>Output BTU/Hr</i>	<i>Efficiency</i>	<i>GPM @ °F Rise</i>
1,400,000	1,162,800	83.0%	116.7 @ 20°F
1,500,000	1,245,000	83.0%	100.0 @ 25°F
1,600,000	1,328,000	83.0%	106.7 @ 25°F
1,700,000	1,411,000	83.0%	113.3 @ 25°F

Note: Typical for Natural Gas. - Oil or LP burner data may vary.

**APPLICATIONS:**

Space Heating and Process Water – typically 140°F - 210°F

**CLEARANCES & CONNECTIONS:**

Clearance recommended between boilers - 6"; From front of burner for service – 10".  
Supply & Return Openings – 2.00"

**CONTROL:**

The Series 1600 can operate on its own controls, but a TRIAD microprocessor control panel is recommended for sequencing more than two boilers to minimize run-time and fuel usage.

**Flue:** Category I when applied appropriately.

**POWER:** 120V, 60Hz, Single Phase, fused for 30 amps. Min / Max gas pressure, typically 5.9" / 14" WC

**WEIGHT/VOLUME:**

- Shipping Weight – 1700 lbs.
- Operating Weight – 3037 lbs.
- Water Volume – 109 gallons

Factory built copper or steel mains available upon request.

ALL BURNER EQUIPMENT UL APPROVED

<b>TRIAD BOILER REPRESENTATIVE:</b>
-------------------------------------

**TRIAD Boiler Systems, Inc.**

West Chicago, IL 60185  
 Phone: 630-562-2700  
 Fax: 630-562-2800  
 Web: www.com.com