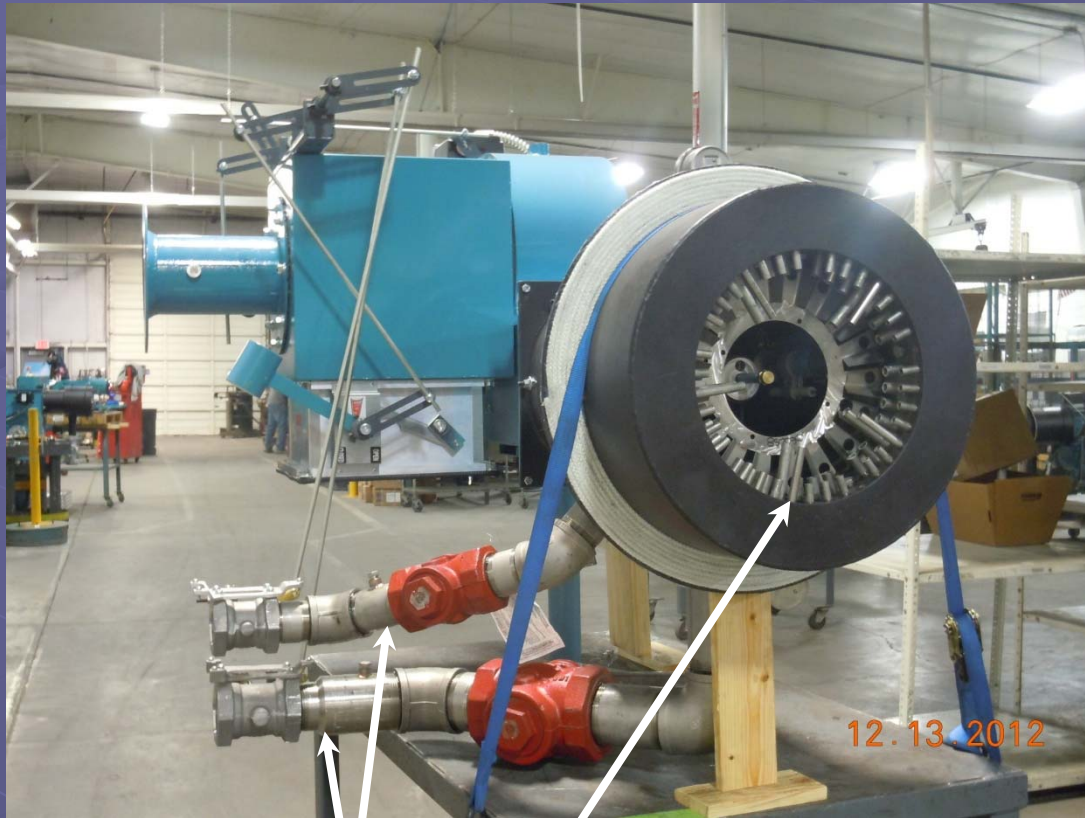


JBXS3G-75 Series Burner Digester / Natural Gas Fuel Linkage Controls

103328



Dual Gas Piping

Dual Orifice Comb Head

Safety Air Shutdown

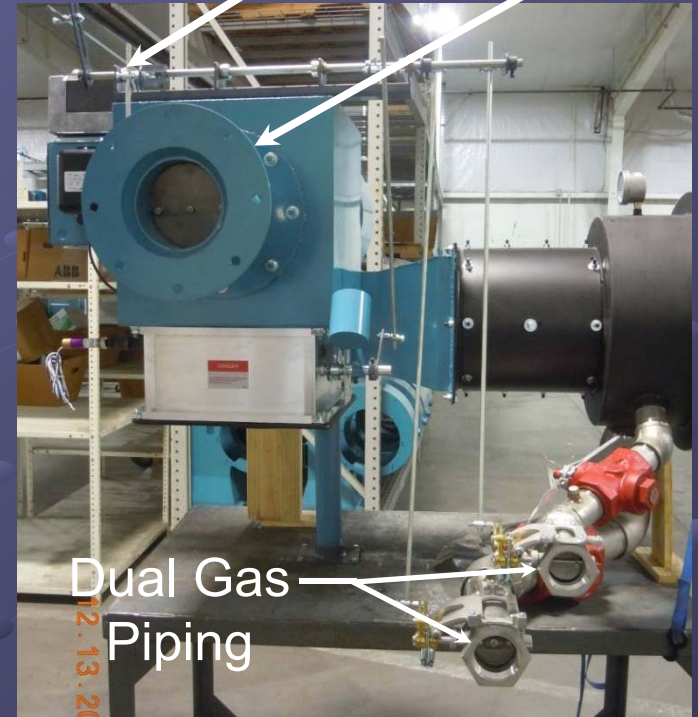
8,400 MBH Burner to be installed on a York Shipley 564-SPW-200 Boiler

Project: Skyway WWTP, Ontario, Canada

Siemens Mod

Motor

FGR



Dual Gas Piping



Air Louver

Sold by Methot Controls