

Justice LJ8

Progressive Cavity Pump

Features

- * Large Hopper
- * Welded Auger
- * Hardened Joints
- * Packing or Mechanical Seal
- * 3-Stage Options
- * Steel or Stainless Steel

Pump Description

The Liberty Justice Series Open Hopper Progressive Cavity Pump represents an ideal pumping solution for spent grain for the brewery industry with its ability to pump spent grain for transfer or wine must. Flow rates of 11.7 GPM per 100 Revolutions (24 GPM to 51 GPM) at 225 PSI are standard through the range of the series. The Justice Series offers a design of a heavy-duty auger mated to a rotor and stator for the most difficult pumping applications.

The large rectangular feed hopper design easily accommodates your pumping medium while the non-pulsating design of the product produces a low-shear flow that conveys your medium along effortlessly. Solids in suspension of up to 50% are accommodated by the Auger design.

The modular design of the Justice LJ8 Series Open Hopper Progressive Cavity pump is a hardened pinned-joint drive assembly with a body available in steel or 316 stainless steel and internal wetted components in either stainless steel or hardened tool steel with hard chrome plating for long-life and durability in abrasive pumping applications.

Rotors and Stators for the Justice LJ8 Series are available in 1, 2, and 3 stages for applications with 75, 150, and 225 PSI discharge pressures with stators available in Buna Nitrile, Viton, EPDM and Natural Rubber. The standard seal design is a set of packing with a lantern ring and flush connections. Mechanical Seal options are readily available.

The Liberty LJ8 Progressive Cavity Pump parts are direct aftermarket replacements that dimensionally interchange with the Moyno™ J8 Series, and the Tarby™ TJ8 Series.*

Contact a Liberty Process representative today for more information about the Justice Series

Materials

Rotor: Tool or Stainless Steel, Chrome-Plated

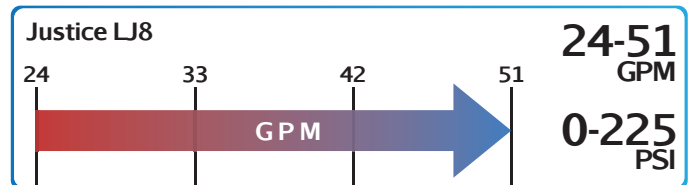
Stator: Buna, Rubber, Viton™, EPDM

Motor: 3, 5, 7.5, and 10 hp

Inlet: 20" x 10"

Outlet: 4"

Bases: Steel and Stainless Steel



Curves



Single Stage



Double Stage



Triple Stage

Please Click the Icon

Drawings



Single Stage



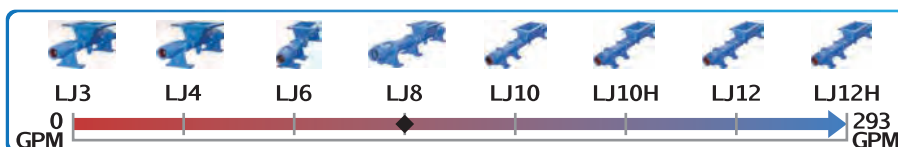
Double Stage



Triple Stage

Please Click the Icon

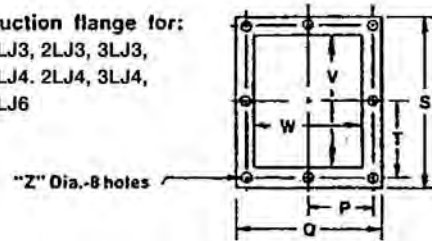
Click To Visit www.libertyprocess.com >>



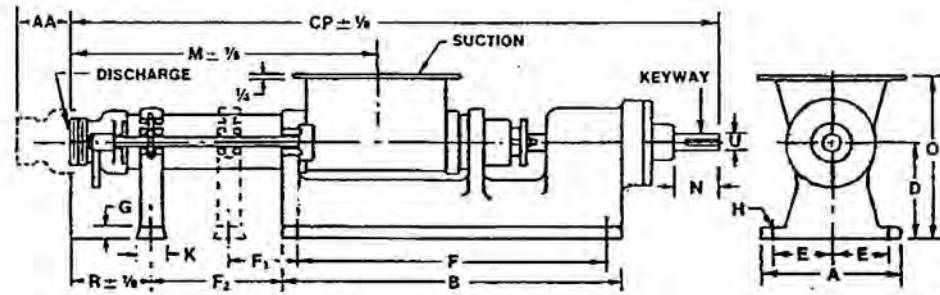
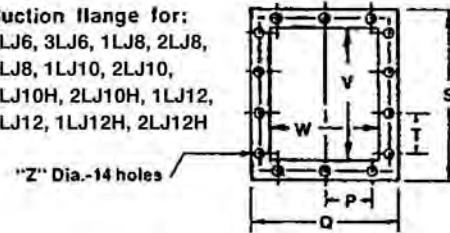
Liberty Process Equipment, Inc.
2525 S Clearbrook Dr.
Arlington Heights, IL 60005-4623
P-(847) 640-7867
F-(847) 640-7855
sales@libertyprocess.com

Type LJ

Suction flange for:
1LJ3, 2LJ3, 3LJ3,
1LJ4, 2LJ4, 3LJ4,
1LJ6

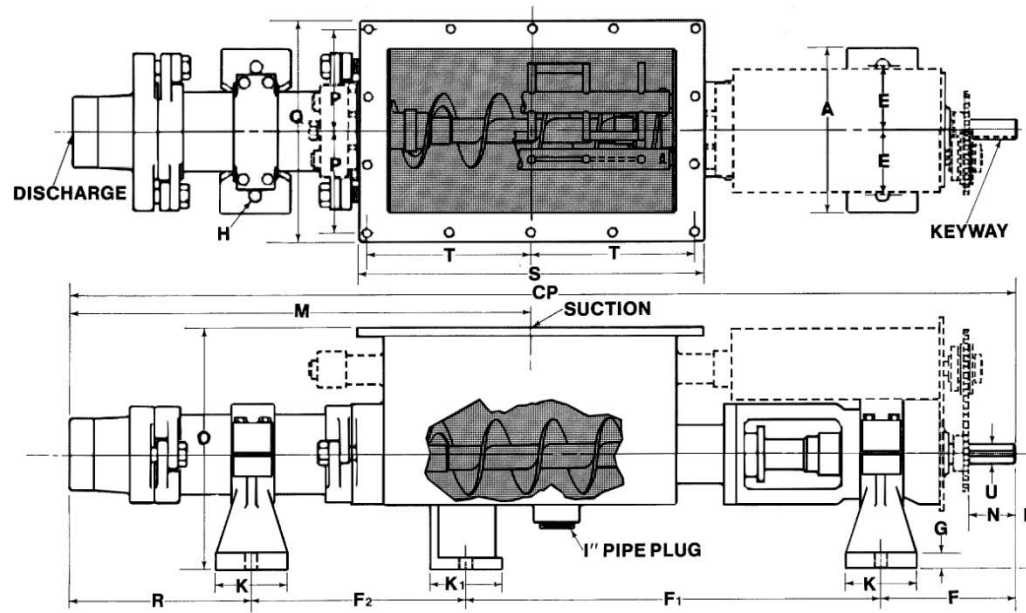


Suction flange for:
2LJ6, 3LJ6, 1LJ8, 2LJ8,
3LJ8, 1LJ10, 2LJ10,
1LJ10H, 2LJ10H, 1LJ12,
2LJ12, 1LJ12H, 2LJ12H



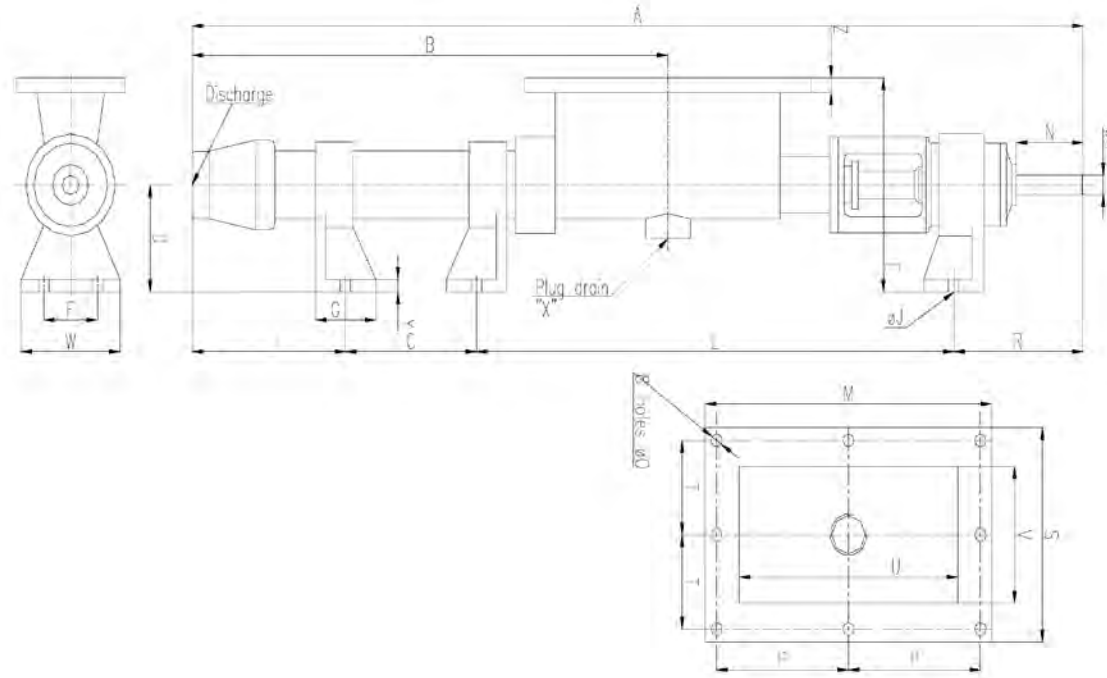
Pump	AA	A	B	CP	D	E	F	F2	G	H	K	M	N	O	P	Q	R	S	T	U	V	W	Z	Key	Disc	LBS.
1LJ4	4 7/8	6 1/4	15 1/2	32 9/16	4 1/8	2 1/2	14	5	1/2	7/16	2	15 3/4	3	7 7/8	2 3/4	6 1/2	7 1/16	9 1/2	4 1/2	15/16	7	4	7/16	1/4 1/8	2	52
1LJ6	6 5/8	8 1/2	19	41	6 1/4	3 1/2	17	7	5/8	11/16	2 1/2	19 5/16	4 3/8	10 3/4	3 3/4	8 1/2	8	10 1/2	4 3/4	1 1/8	8	6	3/16	1/4 1/8	2 1/2	117
1LJ8	5/8	11	26 1/2	54 3/8	8	4 1/2	24	11	3/4	13/16	3	24 1/8	4 1/2	13 3/4	3 1/2	11 1/2	8 1/2	15 1/2	3 3/4	1 3/8	12	8	9/16	3/8 3/16	4	273
1LJ10	10 1/4	11	29 1/4	60 5/16	9 3/4	4 1/2	26 1/4	12	1 1/8	13/16	3	27 7/8	5	15 1/2	4	12 1/2	10 9/16	16 1/2	4	1 7/8	13	9	9/16	1/2x 1/4	4	535
1LJ10H	10 1/4	11	29 1/4	60 9/16	9 3/4	4 1/2	26 1/4	12	1 1/8	13/16	3	28 1/8	5	15 1/2	4	12 1/2	10 16/16	16 1/2	4	1 7/8	13	9	9/16	1/2 1/4	4	535

Justice Series Drawings



Pump	CP	A	D	E	F	F1	F2	G	H	H1	I	K	K1	M	N	O	P	Q	R	S	T	U	V	W	Key	Disc	Lbs.
2LJ3	35-3/8	5-3/8	4-1/8	2-1/8	5-11/16	14-1/4	7-1/2	1/2	7/16	9/16	1	3	1-3/8	18-5/16	2-1/8	8-1/4	3-7/8	9	7-15/16	13-3/4	6-1/4	3/4	9-3/4	5	3/16x3/32	1-1/4	87.5
2LJ4	45-1/4	7	5-1/2	2-3/4	7	18-5/16	10	5/8	9/16	3/4	1-1/4	3-1/2	2	23-1/2	3-1/8	11	5	11-1/2	9-15/16	16-1/4	7-3/8	15/16	11-3/4	7	1/4x1/8	2	157.5
2LJ6	61-1/4	8-5/8	6-1/4	3-1/2	8-9/16	25	14-1/2	11/16	11/16	3/4	2	4	4	33-7/8	4-3/8	12-1/2	5-1/2	12-1/2	13-3/16	19	8-3/4	1-1/8	14-1/2	8	1/4x1/8	2-1/2	258
2LJ8	74-7/8	11-1/2	8	4-1/2	9-1/4	28-5/16	20-1/2	1-7/8	7/8	3/4	2	5	5	41-1/16	4-5/8	16	6-1/2	14-1/2	16-3/16	24-1/2	11-1/2	1-3/8	20	10-1/2	3/8x3/16	4	478

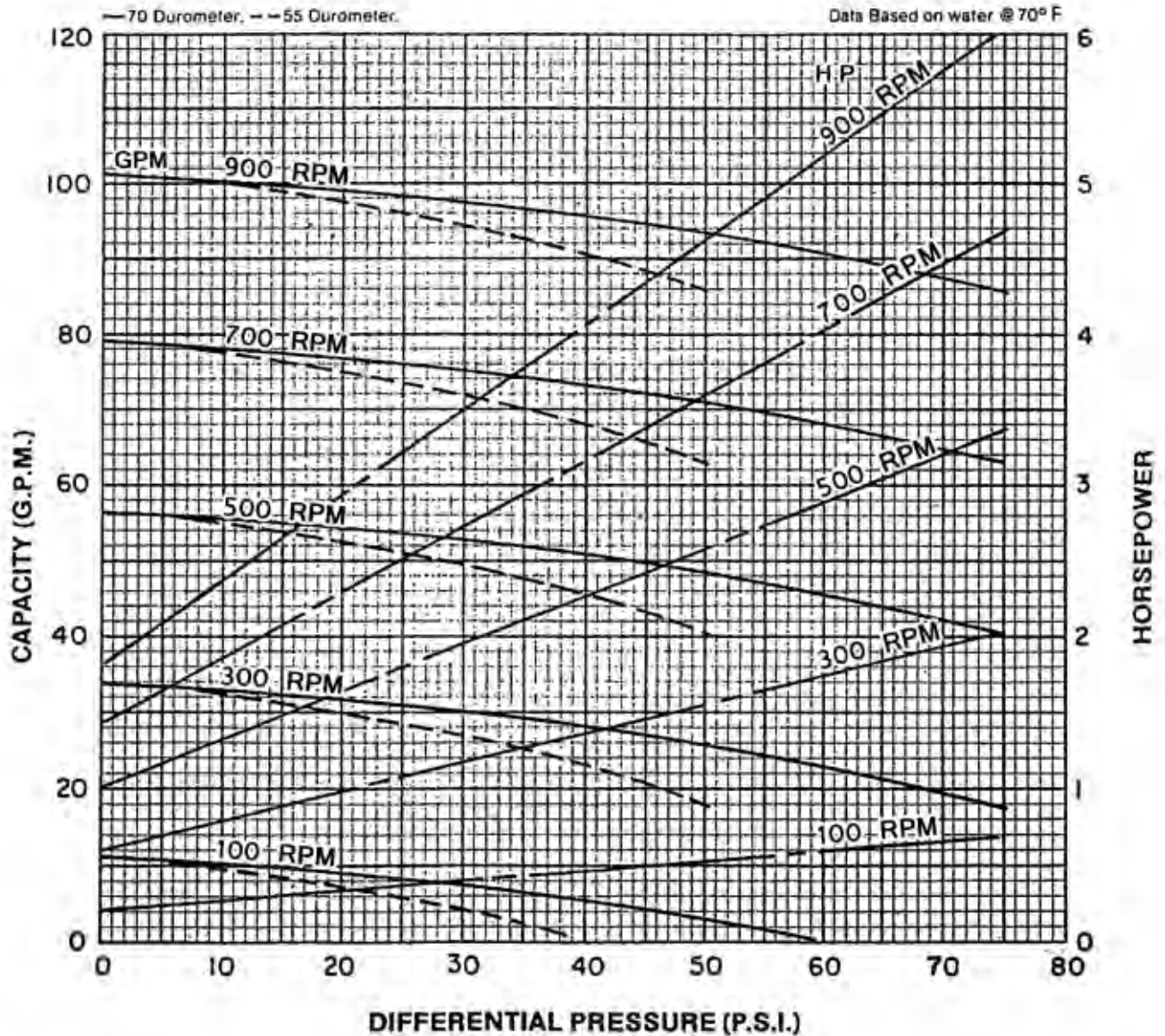
Justice Series Drawings



Pump	A	B	C	D	E	F	G	H	I	J	L	M	N	O	P	R	S	T	U	V	W	X	Y	Z	Key	Disc
3LJ6	71.85	44.48	18	6.25	12.5	7	4	1.125	13.19	11/16	32.1	19	4.375	3/4	8.75	8.56	12.5	5.5	14.5	8	8.63	2	11/16	7/8	1/4X1/8	2-1/2" NPT
3LJ8	87.88	57.75	24	8	16	9	5	1.375	16.75	7/8	37.88	24.5	4.625	3/4	11.5	9.25	14.5	6.5	20	10.5	11.5	2	1.125	15/16	3/8X3/16	4" NPT

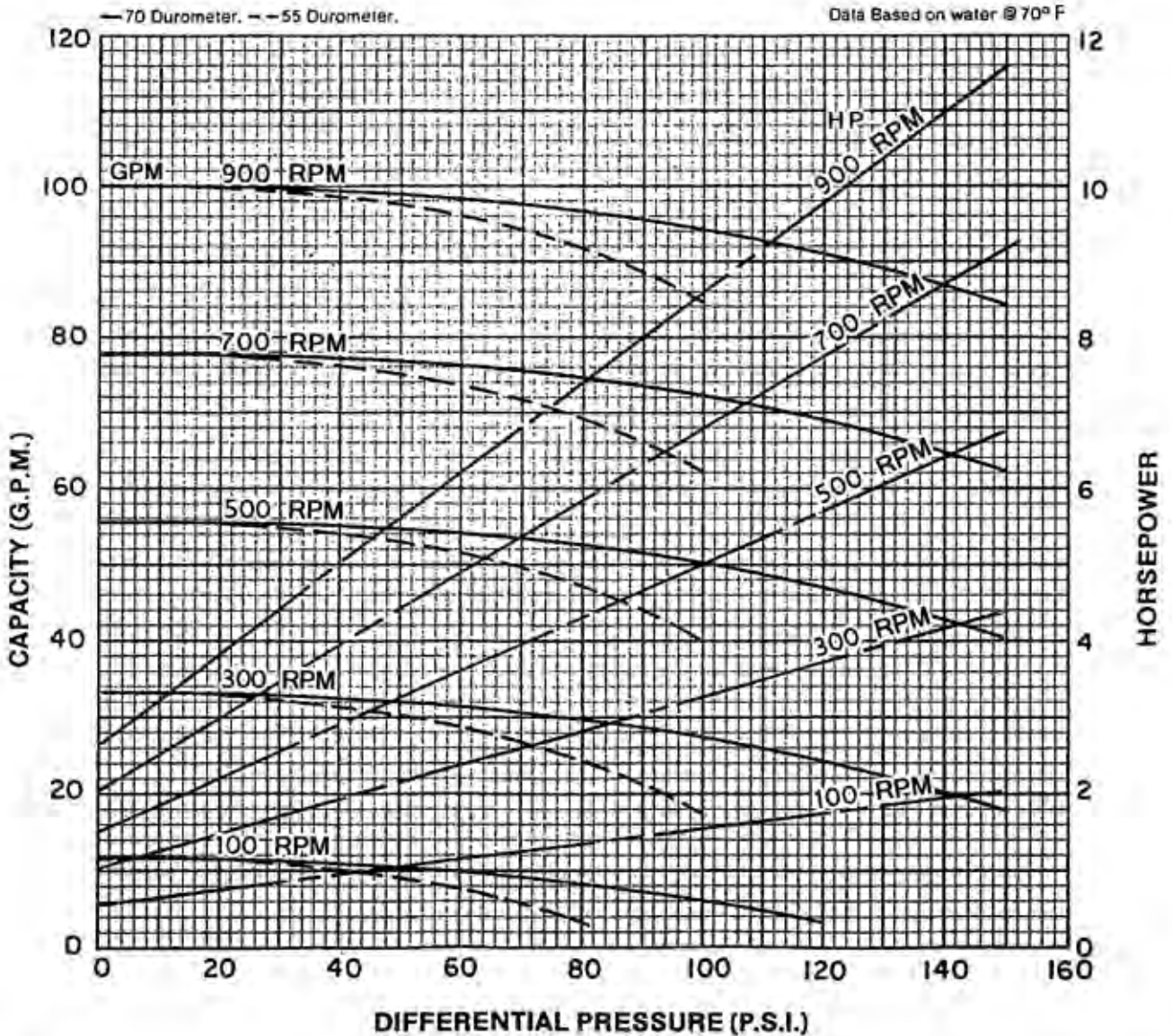
Justice 1LJ8

RPM	100	300	500	700	900		
NPSH REQ'D	.8	2.2	3.7	6.9	10.5		
MIN. HP	1/2	1 1/2	2	3	5		



Justice 2LJ8

RPM	100	300	500	700	900		
NPSH REQ'D	.8	2.2	3.7	6.9	10.5		
MIN. HP	1 1/2	3	5	7 1/2	7 1/2		



Justice 3LJ8

RPM	100	300	500	700	900		
NPSH REQ'D	.8	2.2	3.7	6.9	10.5		
MIN. HP	2	5	7 1/2	10	10		

